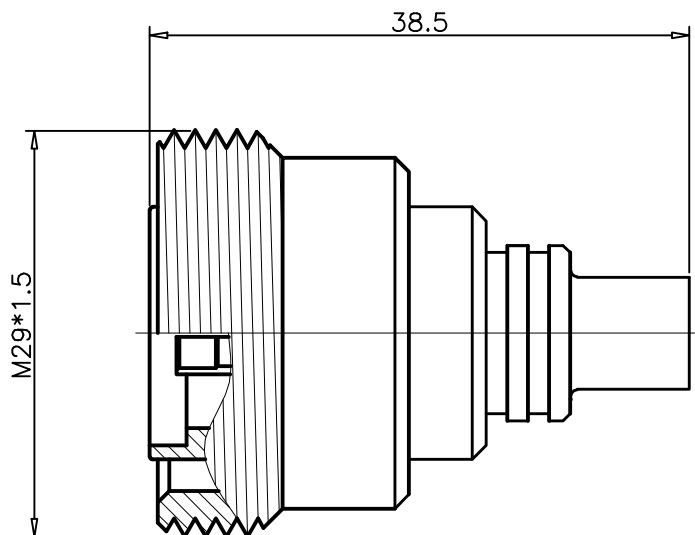


1		2		3		4	
RevNo	Revision note			Date	Signature	Checked	
00	Sketch Only			5/12/14	Teresa	Simon	



Interface Per: IEC-60169-4

Material & Finishing:

1. Center condutor: Phosphor, Siliver Plating
2. Insulators: PTFE
3. Body : Brass, Albaloy Plating

RoHS Compliant.

ALL DIMENSIONS ARE IN MILLIMETERS AND [INCHES]

KERUI ELECTRONIC CO;LTD

THESE DRAWING & SPEC. ARE THE PROPERTY OF KERUI ELECTRONIC CO;LTD AND SHALL NOT BE REPRODUCED, OR COPIED OR USED AS THE BASIS FOR THE MANUFACTURE OR SALE OF APPARATUS OR DEVICES WITHOUT THEIR EXPRESS WRITTEN CONSENT.

UNLESS OTHERWISE NOTED ALL SURFACES FINISHED TO 64/MAX.

ALL TOLERANCES ARE:

DECIMALS	FRACTIONS	ANGLES
x ± 1.0	±1/64	x' ± 1°
x.x ± 0.5		x'x' ± 0.5°
x.xx ± 0.1		

Title

7/16 female solder for .250 cable

Drawn by
Teresa

Ckd by
Simon

Appd by
Richard

Date
5/12/2014

Scale
2:1

Sheet 1 of 1

90 1111 331 01